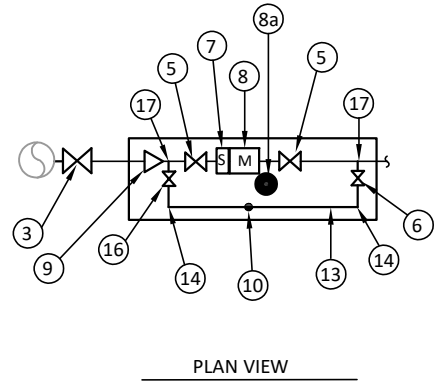


ITEM	QTY	DESCRIPTION
①	___ LF	3" STANDARD STEEL FLANGED SPOOL FOR SERVICE CONNECTION
②	1 EA	3'x5' CDR (WA10366048TA) OR PRE-CAST CONCRETE VAULT (LARGER VAULT MAY BE REQUIRED).
③	1 EA	4" FLG X MJ GATE VALVE
④	___ LF	4" D.I.P. PRESSURE CLASS 350 APPROVED BY SBMWD (RESTRAINED)
⑤	2 EA	3" FLG'D GATE VALVE
⑥	1 EA	1-1/2" CORPORATION STOP
⑦	1 EA	BADGER BRONZE DUAL FLANGE PLATE STRAINER OR EQUIVALENT
⑧	1 EA	3" COMPOUND METER WITH TEST PORT, BALL VALVE, AND PLUG (SEE SBMWD STD. DWG. W1.15 FOR APPROVED LIST).
⑧a	1 EA	SBMWD APPROVED METER AND TRANSMITTER ASSEMBLY, CURRENT ITRON USED BY DEPARTMENT OR APPROVED EQUAL. INSTALL MOUNTING PER MANUFACTURER'S SPECIFICATION (NEW TRACTS OR AS DIRECTED BY SBMWD ONLY).
⑨	1 EA	4" MJ X FLG REDUCER (RESTRAINED)
⑩	1 EA	BRASS TEE WITH IRON PIPE TO COPPER ADAPTERS BUSH TO 3/4" WITH HOSE BIB
⑪	1 EA	8" GATE VALVE CAN ASSEMBLY (PER SBMWD STD. DWG. W3.1)
⑫	1 EA	EPOXY COATED TAPPING SLEEVE, WELD NOZZLE, OR MJ X FLG TEE
⑬	1 EA	HARD COPPER PIPE (U.S. MANUFACTURER) 1-1/2" BYPASS LOOP
⑭	2 EA	1-1/2" COMPRESSION 90° BEND
⑮	1 EA	3" WELD SLIP FLANGE
⑯	1 EA	1-1/2" BRASS NIPPLE, LOCK-WING BALL VALVE, AND CTI ADAPTER
⑰	1 EA	1-1/2" BLACK COUPLING OR THREDOLET FOR BYPASS
⑱	1 EA	3' X 5' DOUBLE DOOR ACCESS HATCH PER SBMWD STD. DWG. W6.21
⑲	3 EA	8" CONCRETE BLOCK SUPPORT
⑳	---	INSTALL MIN. 6" THICK 3/4" CRUSHED ROCK GRAVEL (NO FINES)
㉑	---	INSTALL 6" THICK BACKFILL (SE 30) OR BETTER, 95% COMPACTION
㉒	1 EA	INSTALL PIPELINE SEAL AND INSULATOR, INC INSULATING KIT TO BE USED BETWEEN THE TAPPING SADDLE AND VALVE WHEN DISSIMILAR METALS (DUCTILE IRON AND STEEL) ARE INVOLVED
㉓	___ LF	INSTALL 1/2" EXPANSION JOINT ON ALL FOUR SIDES
㉔	1 EA	SUMP AND SUMP GRATE DETAIL PER SBMWD STD. DWG. W6.30

MAINTAINED BY SBMWD

INSTALLED AND MAINTAINED BY OTHERS



REFERENCE ENGINEERING SPECIFICATIONS;
WATER SERVICE ASSEMBLIES: 404211 - FOR METER,
METER BOXES AND PIPING; MATERIALS AND
INSTALLATION.

NOTE:
SEE SPECIFICATIONS FOR BACKFILL REQUIREMENTS

REVISION DATE: 5/24/2016

D.D.M.	MAY 16	SAN BERNARDINO MUNICIPAL WATER DEPARTMENT	3" DOMESTIC SERVICE	DRAWING NUMBER	
F.D.L.	JULY 14			SBMWD	
F.D.L.	JAN. 13			W1.4	
D.D.M.	JAN. 11				
REVISION	DATE				
SCALE:	NONE	APPROVED		DATE	07/04/2019
		WARREN HUANG, P.E. RCE 49208			