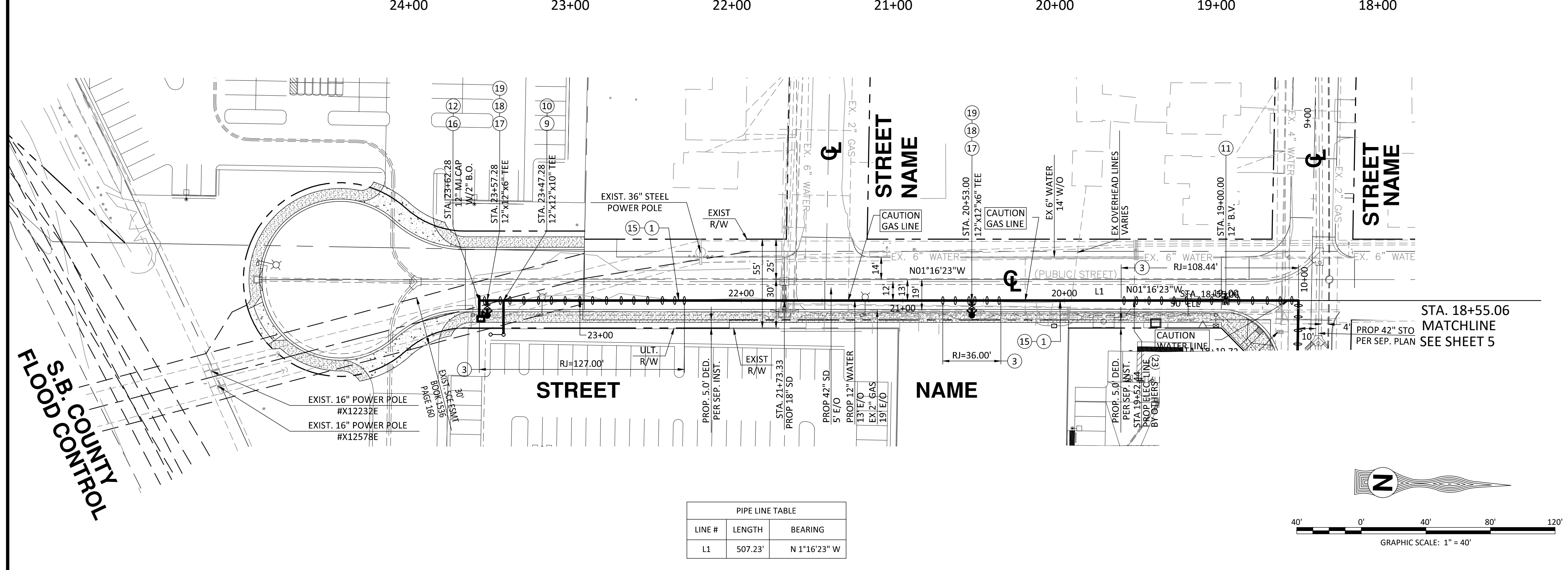


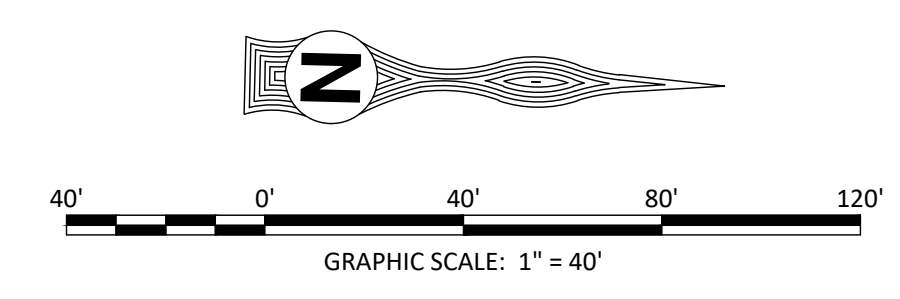
PROFILE SCALE:
 VERT: 1 in = 4 ft
 HORZ: 1 in = 40 ft



- WATER CONSTRUCTION NOTES:**
- 1 INSTALL 12" DUCTILE IRON PIPE (TJ) POLYWRAPPED PER S.B.M.W.D. STANDARD SPECIFICATIONS
 - 2 INSTALL 16" STAINLESS STEEL TAPPING SADDLE WITH 12" FLG G.V. AND CONNECT TO EX 16" CL&C.C. WATER MAIN PER S.B.M.W.D. STD. NO. W3.5 (WITH PIPELINE SEAL & INSULATOR)
 - 3 INSTALL LINEAR RESTRAIN JOINTS PER S.B.M.W.D. STD. NO. W6.4. (RESTRAINED LENGTH PER PLAN)
 - 4 INSTALL CONCRETE THRUST BLOCK PER S.B.M.W.D. STD. NO. W6.4A
 - 5 INSTALL 12" F.L. GATE VALVE PER S.B.M.W.D. STD. NO. W3.1 & W3.3
 - 6 INSTALL 12" D.I. M.J. SLEEVE (FOR FINAL TIE IN)
 - 7 INSTALL 12" F.L. x M.J. ADAPTER
 - 8 INSTALL 12" 90° D.I. ELL M.J.
 - 9 INSTALL 12" M.J. x 12" M.J. x 10" FL D.I. TEE
 - 10 INSTALL 10" FIRE SERVICE WITH DOUBLE CHECK DETECTOR. INSTALL 10" M.J. CAP AND 2" FLUSH PORT. TIE-IN TO 10" BACKFLOW DEVICE AFTER TESTING PHASE IS COMPLETE. PER S.B.M.W.D. STD. NO. W1.14 AND W6.7
 - 11 INSTALL 12" F.L. BUTTERFLY VALVE PER S.B.M.W.D. STD. NO. W3.2 & W3.3
 - 12 INSTALL 2" AUTOMATIC BLOWOFF PER S.B.M.W.D. STD. NO. W6.8 CONNECT TO CAP.
 - 13 INSTALL 2" COMBINATION SERVICE DOMESTIC/IRRIGATION PER S.B.M.W.D. W1.8
 - 14 INSTALL 1" IRRIGATION SERVICE PER S.B.M.W.D. W1.1
 - 15 TRENCH, BACKFILL, AND PAVEMENT REPLACEMENT PER S.B.M.W.D. STD. NO. W5.1
 - 16 INSTALL 12" M.J. D.I. END CAP WITH 2" THREADED PORT RESTRAIN W/MEGALUG CONNECT AUTOMATIC BLOWOFF TO PORT ON CAP. PER S.B.M.W.D. STD. NO. W6.8
 - 17 INSTALL 12" M.J. x 12" M.J. x 6" FL D.I. TEE
 - 18 INSTALL 6" FIRE HYDRANT ASSEMBLY PER S.B.M.W.D. STD. W2.2 (CONFIGURATION B)
 - 19 INSTALL BLUE DOT PAVEMENT MARKER PER S.B.M.W.D. STD. NO. W6.3
 - 20 INSTALL CHLORINATION AND FLUSHING PORT PER S.B.M.W.D. STD. NO. W6.7
 - 21 INSTALL 12" 45° D.I. ELL M.J. (ROLLED TO ACHIEVE VERTICAL AND HORIZONTAL ALIGNMENT)
 - 22 RELOCATE EXISTING FIRE HYDRANT TO NORTH SIDE OF BENEDICT ROAD (BY OTHERS)
 - 23 PROTECT IN PLACE EXISTING 4" WATER MAIN. REMOVE ALL APPURTENANCES SERVICING THE SOUTH SIDE (PROPOSED DEVELOPMENT) AND PROTECT IN PLACE ALL APPURTENANCES SERVICING THE NORTH SIDE (EXISTING IMPROVEMENTS)
 - 24 RELOCATE/ADJUST EXISTING GAS LATERAL AS NEEDED. CONTRACTOR TO COORDINATE WITH SOUTHERN CALIFORNIA GAS COMPANY.
 - 25 RELOCATE/ADJUST EXISTING WATER LATERAL AS NEEDED. CONTRACTOR TO COORDINATE WITH RESPECTIVE UTILITY OWNER/PROVIDER.
 - 26 INSTALL 2" AIR VAC & ENCLOSURE PER SBMWD STD. NO. W7.1 & 7.6
 - 27 INSTALL 12" 45° D.I. ELL M.J.

S.B. COUNTY
 FLOOD CONTROL

PIPE LINE TABLE		
LINE #	LENGTH	BEARING
L1	507.23'	N 1°16'23" W



UNDERGROUND SERVICE ALERT
 CALL: TOLL FREE
 1-800-227-2600
 TWO WORKING DAYS
 BEFORE YOU DIG

INSERT ENGINEER'S
 STAMP HERE

INSERT CONSULTANT LOGO, NAME,
 ADDRESS AND PHONE NO. HERE

APPROVED BY: _____ DATE: _____
 REGISTERED CIVIL ENGINEER No. XXXXX

MARK	REVISIONS	APPROVED	DATE	APPROVED	DATE

DESIGNED BY: XX DRAWN BY: XX CHECKED BY: XX DESIGN ENGINEER SBMWD ENGINEER

BENCHMARK:

 ELEV. = XXXX.XX FT.

**CITY OF SAN BERNARDINO
 WATER DEPT.**

PROJECT MANAGER: ROBERT LINDBERG
 ENGINEERING ASSOCIATE

ENGINEERING MANAGER: WARREN HUANG, P.E.
 CA. R.C.E. 49208

GENERAL MANAGER: MIGUEL GUERRERO, P.E.
 CA. R.C.E. 73239

CITY OF SAN BERNARDINO
 MUNICIPAL WATER DEPARTMENT

PROJECT TITLE
 STREET NAME
 STA 18+55.06 - STA. YY+YY.YY

DRAWING SCALES:
 HORIZ: N/A VERT: N/A

C.O. NO.:
 XXXXX

C2

SHEET 6 OF XX

PROJECT TITLE - XXXX SUBMITTAL