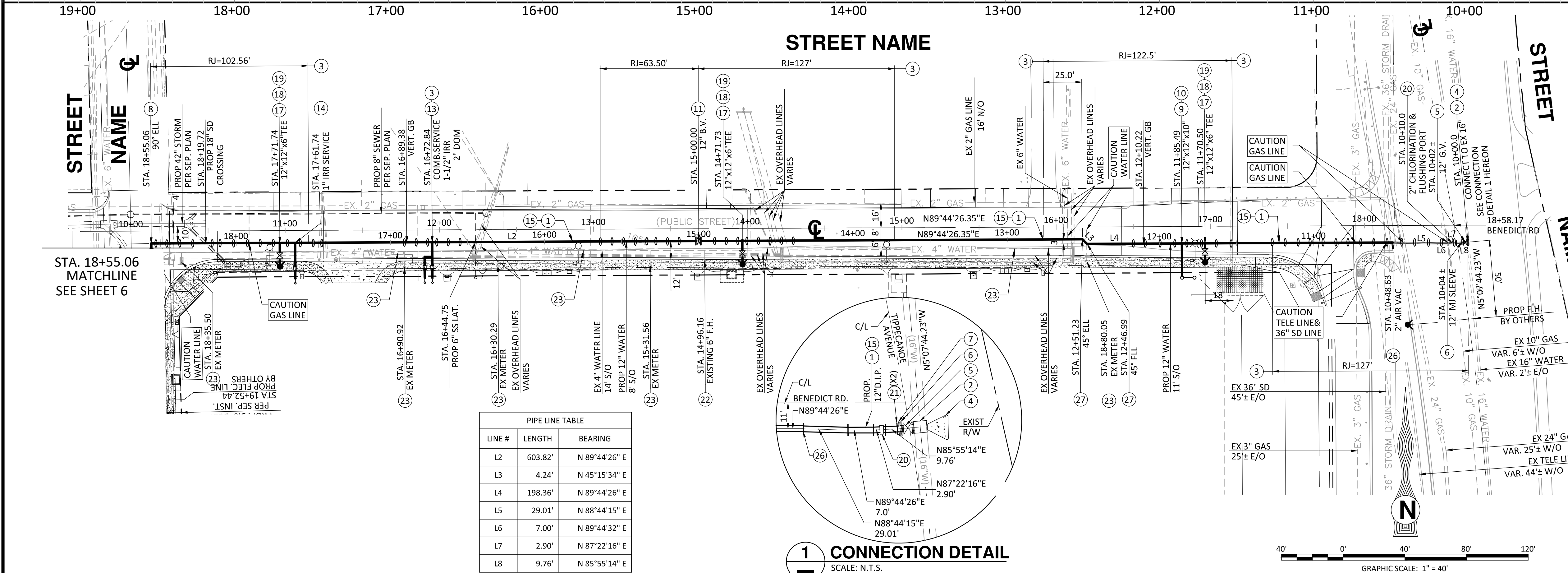


PROFILE SCALE:  
VERT: 1 in = 4 ft  
HORIZ: 1 in = 40 ft



LINE #	LENGTH	BEARING
L2	603.82'	N 89°44'26" E
L3	4.24'	N 45°15'34" E
L4	198.36'	N 89°44'26" E
L5	29.01'	N 88°44'15" E
L6	7.00'	N 89°44'32" E
L7	2.90'	N 87°22'16" E
L8	9.76'	N 85°55'14" E

**1 CONNECTION DETAIL**  
SCALE: N.T.S.

- WATER CONSTRUCTION NOTES:**
- INSTALL 12" DUCTILE IRON PIPE (TJ) POLYWRAPPED PER S.B.M.W.D. STANDARD SPECIFICATIONS
  - INSTALL 16" STAINLESS STEEL TAPPING SADDLE WITH 12" FLG G.V. AND CONNECT TO EX 16" CL&CC. WATER MAIN PER S.B.M.W.D. STD. NO. W3.5 (WITH PIPELINE SEAL & INSULATOR) (RESTRAINED LENGTH PER PLAN)
  - INSTALL LINEAR RESTRAIN JOINTS PER S.B.M.W.D. STD. NO. W6.4 (RESTRAINED LENGTH PER PLAN)
  - INSTALL CONCRETE THRUST BLOCK PER S.B.M.W.D. STD. NO. W6.4A
  - INSTALL 12" F.L. GATE VALVE PER S.B.M.W.D. STD. NO. W3.1 & W3.3
  - INSTALL 12" D.I. M.J. SLEEVE (FOR FINAL TIE IN)
  - INSTALL 12" F.L. x M.J. ADAPTER
  - INSTALL 12" 90° D.I. ELL M.J.
  - INSTALL 12" M.J. x 12" M.J. x 10" FL D.I. TEE
  - INSTALL 10" FIRE SERVICE WITH DOUBLE CHECK DETECTOR. INSTALL 10" M.J. CAP AND 2" FLUSH PORT. TIE-IN TO 10" BACKFLOW DEVICE AFTER TESTING PHASE IS COMPLETE. PER S.B.M.W.D. STD. NO. W1.14 AND W6.7
  - INSTALL 12" F.L. BUTTERFLY VALVE PER S.B.M.W.D. STD. NO. W3.2 & W3.3
  - INSTALL 2" AUTOMATIC BLOWOFF PER S.B.M.W.D. STD. NO. W6.8 CONNECT TO CAP.
  - INSTALL 2" COMBINATION SERVICE DOMESTIC/IRRIGATION PER S.B.M.W.D. W1.8
  - INSTALL 1" IRRIGATION SERVICE PER S.B.M.W.D. W1.1
  - TRENCH, BACKFILL, AND PAVEMENT REPLACEMENT PER S.B.M.W.D. STD. NO. W5.1
  - INSTALL 12" M.J. D.I. END CAP WITH 2" THREADED PORT RESTRAIN W/MEGALUG CONNECT AUTOMATIC BLOWOFF TO PORT ON CAP. PER S.B.M.W.D. STD. NO. W6.8
  - INSTALL 12" M.J. x 12" M.J. x 6" FL D.I. TEE
  - INSTALL 6" FIRE HYDRANT ASSEMBLY PER S.B.M.W.D. STD. W2.2 (CONFIGURATION B)
  - INSTALL BLUE DOT PAVEMENT MARKER PER S.B.M.W.D. STD. NO. W6.3
  - INSTALL CHLORINATION AND FLUSHING PORT PER S.B.M.W.D. STD. NO. W6.7
  - INSTALL 12" 45° D.I. ELL M.J. (ROLLED TO ACHIEVE VERTICAL AND HORIZONTAL ALIGNMENT)
  - RELOCATE EXISTING FIRE HYDRANT TO NORTH SIDE OF BENEDICT ROAD (BY OTHERS)
  - PROTECT IN PLACE EXISTING 4" WATER MAIN. REMOVE ALL APPURTENANCES SERVICING THE SOUTH SIDE (PROPOSED DEVELOPMENT) AND PROTECT IN PLACE ALL APPURTENANCES SERVICING THE NORTH SIDE (EXISTING IMPROVEMENTS)
  - RELOCATE/ADJUST EXISTING GAS LATERAL AS NEEDED. CONTRACTOR TO COORDINATE WITH SOUTHERN CALIFORNIA GAS COMPANY.
  - RELOCATE/ADJUST EXISTING WATER LATERAL AS NEEDED. CONTRACTOR TO COORDINATE WITH RESPECTIVE UTILITY OWNER/PROVIDER.
  - INSTALL 2" AIR VAC & ENCLOSURE PER SBMWD STD. NO. W7.1 & 7.6
  - INSTALL 12" 45° D.I. ELL M.J.

**UNDERGROUND SERVICE ALERT**  
CALL: TOLL FREE  
1-800-227-2600  
TWO WORKING DAYS  
BEFORE YOU DIG

INSERT ENGINEER'S  
STAMP HERE  
APPROVED BY: \_\_\_\_\_ DATE: \_\_\_\_\_  
REGISTERED CIVIL ENGINEER No. XXXXX

MARK	REVISIONS	APPROVED	DATE	APPROVED	DATE

DESIGNED BY: XX DRAWN BY: XX CHECKED BY: XX DESIGN ENGINEER SBMWD ENGINEER

BENCHMARK:  
ELEV. = XXXX.XX FT.

**CITY OF SAN BERNARDINO WATER DEPT.**

PROJECT MANAGER: ROBERT LINDBERG  
ENGINEERING ASSOCIATE  
ENGINEERING MANAGER: WARREN HUANG, P.E.  
CA. R.C.E. 49208  
GENERAL MANAGER: MIGUEL GUERRERO, P.E.  
CA. R.C.E. 73239

**CITY OF SAN BERNARDINO MUNICIPAL WATER DEPARTMENT**

PROJECT TITLE  
STREET NAME  
STA 10+00.00 - STA. 18+55.06

DRAWING SCALES:  
HORIZ: N/A VERT: N/A  
C.O. NO.:  
**XXXXX**  
**C1**  
SHEET **5** OF **XX**

PROJECT TITLE - XXXX-SUBMITTAL